

***jota kit 1443***  
**Efficient Veneer Prep Kit**

**Veneer preparation - step-by-step**

A selection of instruments for anatomically adapted  
Veneer preparations

Supporting minimal abrasion of enamel

Includes new "Double Grit Grinder" Diamond



## jota kit 1443 Efficient Veneer Prep Kit

### Harmonized instrument set for a high esthetic veneer preparation

Perfect and esthetical veneer preparation is one of the most challenging missions of state of the art dentistry. Expectations of patients – for single-session treatment - as well as the responsibility to perform efficiently with smooth workflows became a benchmark of modern dentistry. Jota is introducing its “Efficient Veneer Prep Kit 1443” including the brand new „Double-Grit Grinder” which allows professionals to finish the prepared gingival margin in the same step as the removal of the labial marked enamel. Interchanging instruments is no longer necessary.

#### Jota Double-Grit Grinder:

852GF.FG.014 - 856314199534014

852GF.FG.016 - 856314199534016



**Jota efficiency!**  
Removing and finishing with just  
one instrument



#### Marking gingival margin:

With the **Diamond Instrument 801** the gingival margin is marked.

#### Recommended speed:

approx. 300000 rpm.



#### First depth indication:

With the **Depth Marker 815.FG.022** a 0.3 mm mark is prepared in the cervical third of the facial surface.

#### Recommended speed:

approx. 300000 rpm.



#### Second depth indication:

With the **Depth Marker 815.FG.026** a 0.5 mm mark is prepared in the incisal third of the facial surface. This mark should be in app. 2mm distance from the incisal edge. If necessary, prepare a third depth mark in the middle third.

#### Recommended speed:

approx. 300000 rpm.

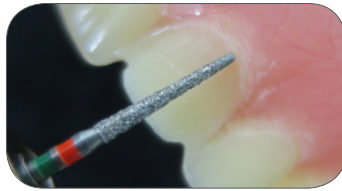


### Preparing proximal chamfer & removing of enamel

With the Jota „Double-Grit Grinder“ 852GF the proximal chamfer lines are prepared and the labial marked enamel is removed.

#### Recommended speed:

approx. 160000 rpm.



### Finishing the gingival margin & proximal chamfer

Without changing the instrument the gingival margin and the proximal chamfer lines can be finished with the tip of the „Double-Grit Grinder“ 852GF.

#### Recommended speed:

approx. 160000 rpm.

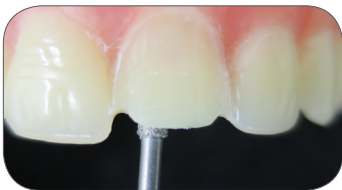


### Reducing incisal edge:

If coverage of the incisal edge with ceramic or composite is planned, the incisal edge has to be reduced by using the “Double Grit Grinder“ 852GF.

#### Recommended speed:

approx. 160000 rpm.



### Preparing occlusal resistance angle:

If the incisal edge is reduced, an occlusal resistance angle has to be prepared at the junction of the incisal and lingual surface, using the 815 depth cutter.

#### Recommended speed:

approx. 160000 rpm.



### Finishing the veneering

With the fine football Diamond 833F the cement excess on the lingual surface is removed.

#### Recommended speed:

approx. 190000 rpm.



### Finishing

For final refinishing and pre-polishing of the proximal and gingival areas the 890EF Diamond is used.

#### Recommended speed:

approx. 300000 rpm.

## jota kit 1443

### Efficient Veneer Prep Kit

**801.FG.014**

Round diamond trimmer with medium grit for indicating the preparation depth at the gingival margin.



↻ 300000 rpm

**852GF.FG.014**

The "Double-Grit Grinder" is a brand new Jota diamond trimmer with fine diamond grit at the tip of the instrument for finishing margins and a coarse grit at the body for removing enamel.



Fine grit

Coarse grit

↻ 160000 rpm

**815.FG.022**

Diamond trimmer with medium grit for preparing 0.5mm labial depth markings.



↻ 160000 rpm

**852GF.FG.016**

The "Double-Grit Grinder" is a brand new Jota diamond trimmer with fine diamond grit at the tip of the instrument for finishing margins and a coarse grit at the body for removing enamel.



Fine grit

Coarse grit

↻ 160000 rpm

**815.FG.026**

Diamond trimmer with medium grit for preparing a 0.5mm labial depth markings.



↻ 160000 rpm

**890EF.FG.010**

Diamond trimmer with extra fine natural diamond grit with average grain size of 25µm. For final refinishing and pre-polishing of the proximal and gingival areas.



↻ 300000 rpm

**833F.FG.023**

Diamond trimmer with bonded fine natural diamond grit. For refinishing and removing of cement excesses on the palatal areas.



↻ 190000 rpm

JOTA-Dealer

108002.5950.0283 - 12/2016